



Point West Office Space For Lease

Capital City Corporate Center

1451 River Park Drive, Sacramento



±22,372 Square Feet Available (Divisible to ±1,123 SF)



Project Highlights

- Attractive Building in the Heart of Point West with Multiple Office Suites Ready for Occupancy
- Common Conference Center Featuring 2 Meeting Rooms and Kitchenette
- Mature Landscaping and Water Features
- Centrally Located Among All of Sacramento's Major Freeways
- Nearby Services Include Banks, Restaurants, Shopping Centers and Cal Expo
- Above Standard Parking

Contact Exclusive Agents

Kris Kalmbach
kkalmbach@ccarey.com
916.569.2323
Lic #01436668

Zac Collie
zcollie@ccarey.com
916.569.2356
Lic #01841055

www.ccarey.com

CORNISH & CAREY COMMERCIAL
ONCOR INTERNATIONAL
1601 RESPONSE ROAD, SUITE 160
SACRAMENTO, CA 95815
TEL 916.920.4400
FAX 916.920.0854

The information contained herein has been given to us by the owner of the property or other sources we deem reliable. We have no reason to doubt its accuracy, but we do not guarantee it. All information should be verified prior to purchase or lease.

Point West Office Space For Lease

Capital City Corporate Center

1451 River Park Drive, Sacramento

Space Availability

- Lease Rate: \$1.75, Full Service
- Available Suites:

Suite 245	- 1,123 Rentable Square Feet
Suite 288	- 1,204 Rentable Square Feet
Suite 242	- 1,275 Rentable Square Feet
Suite 241	- 1,345 Rentable Square Feet
Suite 148	- 1,358 Rentable Square Feet
Suite 199	- 1,804 Rentable Square Feet
Suite 208	- 1,962 Rentable Square Feet
Suite 251	- 2,195 Rentable Square Feet
Suite 260	- 2,233 Rentable Square Feet
Suite 145	- 2,311 Rentable Square Feet
Suite 241 & 245	- 2,468 Rentable Square Feet
Suite 245 & 251	- 3,318 Rentable Square Feet
Suite 241,245 & 251	- 4,663 Rentable Square Feet
Suite 110	- 5,562 Rentable Square Feet

**5% Commission
to Procuring Agent!**

08-2054•10/09

Contact Exclusive Agents

Kris Kalmbach

kkalmbach@ccarey.com

916.569.2323

Lic #01436668

Zac Collie

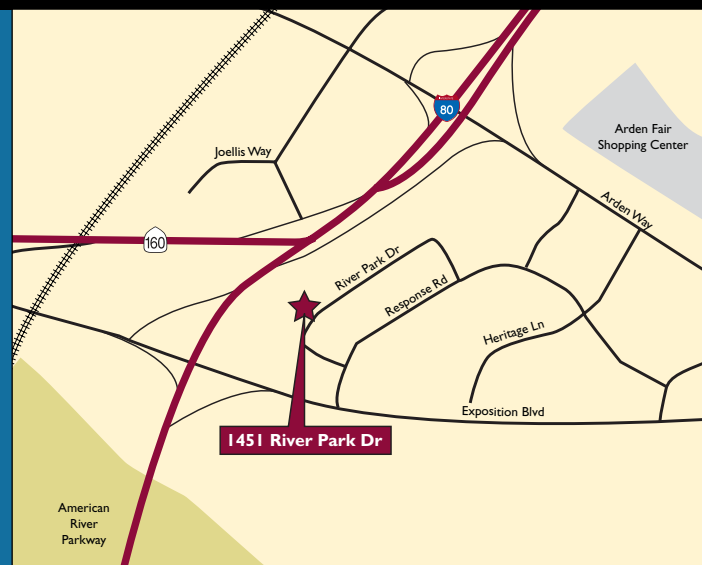
zcollie@ccarey.com

916.569.2356

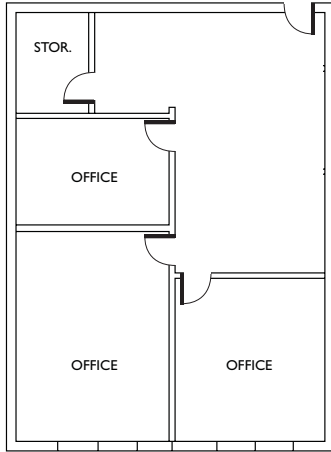
Lic #01841055

CORNISH & CAREY COMMERCIAL
ONCOR INTERNATIONAL
1601 RESPONSE ROAD, SUITE 160
SACRAMENTO, CA 95815
TEL 916.920.4400
FAX 916.920.0854

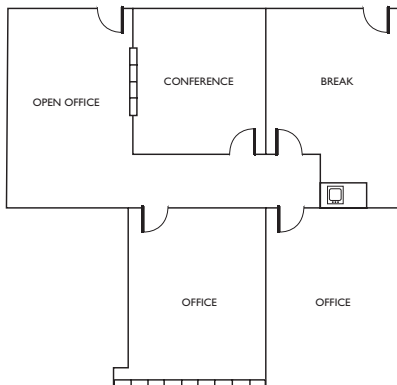
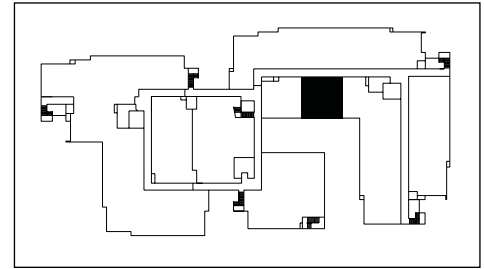
Location Map



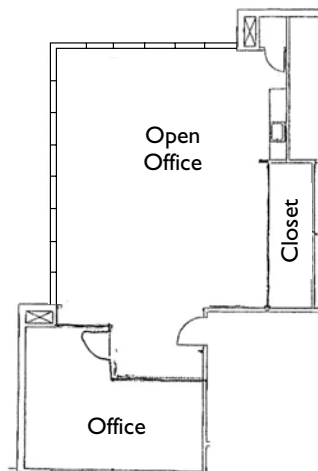
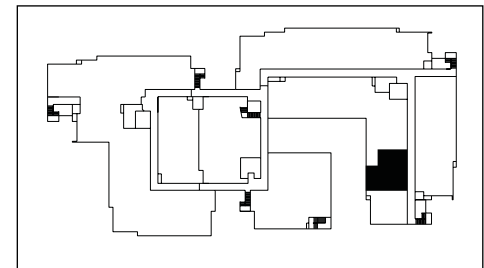
Floorplan: Suites 245 • 288 • 242



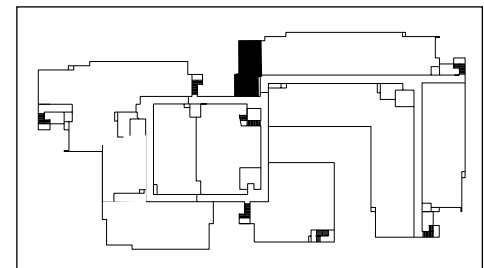
Suite 245 - ±1,123 RSF



Suite 288 - ±1,204 RSF



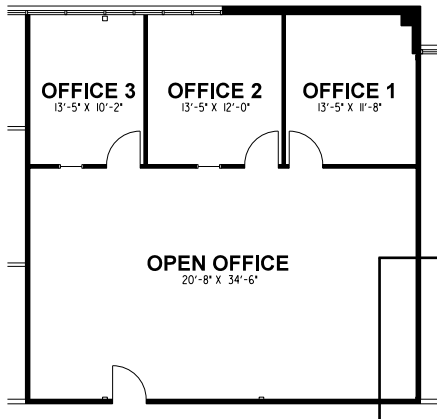
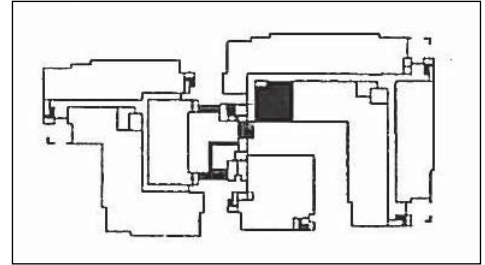
Suite 242 - ±1,275 RSF



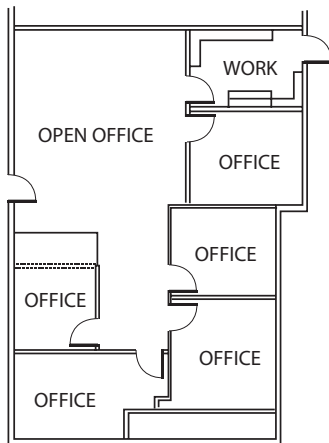
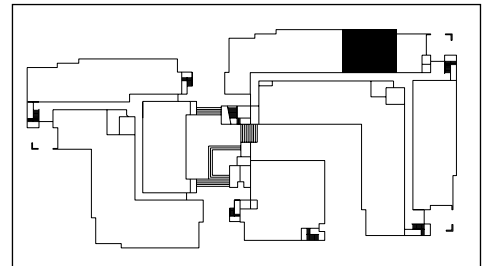
Floorplan: Suites 241 • 148 • 199



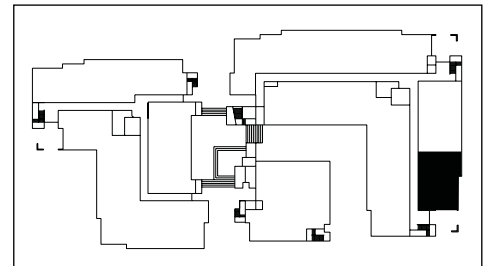
Suite 241 - ±1,345 RSF



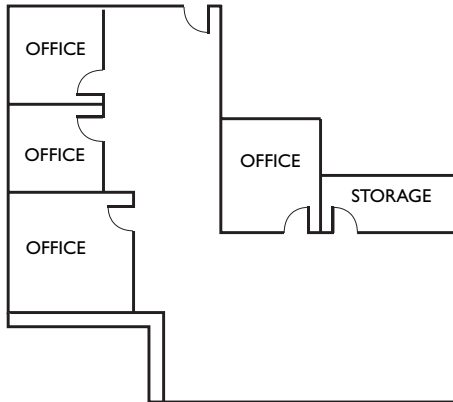
Suite 148 - ±1,358 RSF



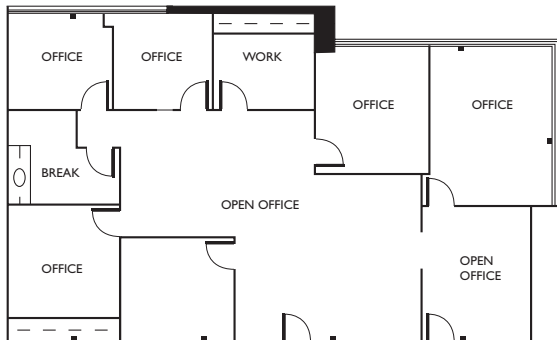
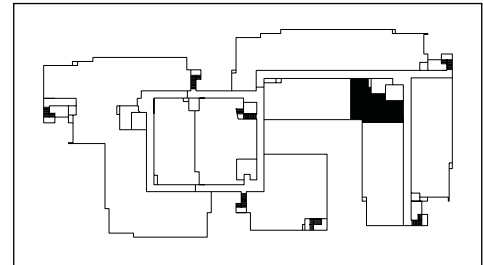
Suite 199 - ±1,804 RSF



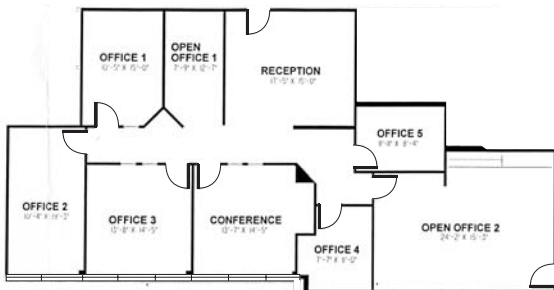
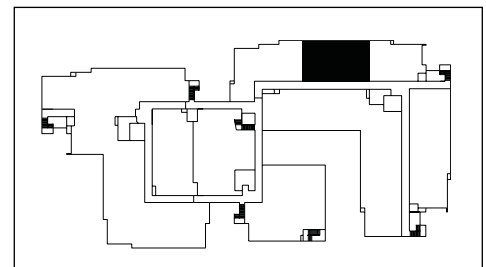
Floorplan: Suites 251 • 260 • 145 • 208



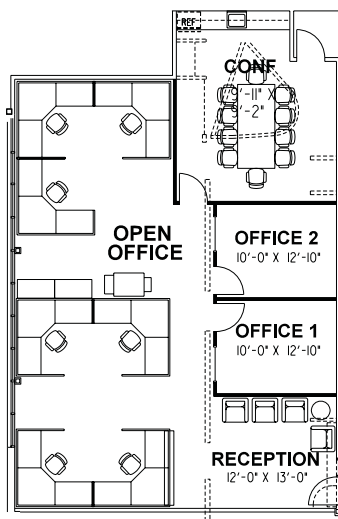
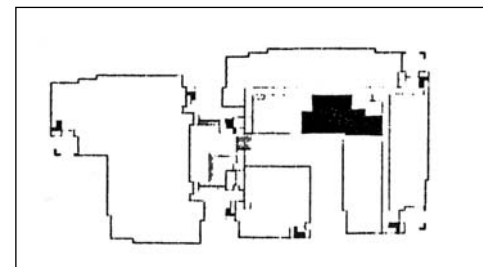
Suite 251 - ±2,195 RSF



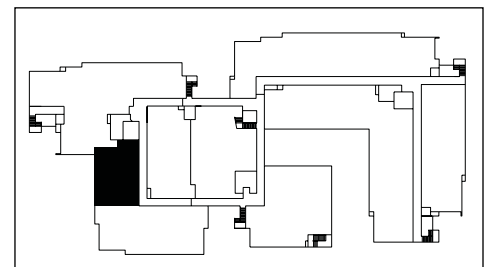
Suite 260 - ±2,233 RSF



Suite 145 - ±2,311 RSF



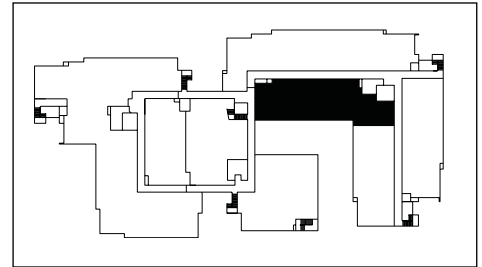
Suite 208 - ±1,962 RSF



Floorplan: Suites 241, 245 & 251 • 110



Suite 241, 245 & 251 - ±4,663 RSF



Suite 110 - ±5,562 RSF

